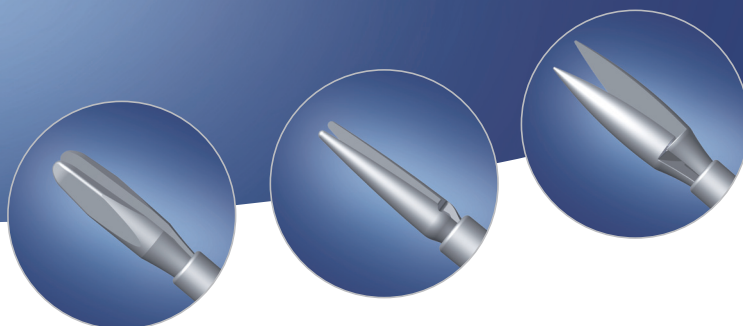
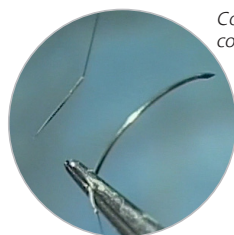


HATTENBACH IRIS SUTURE HYBRID INSTRUMENT SET



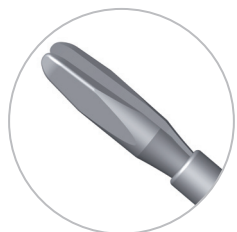
25 Gauge Instrument Set – Perfect for the Iris Suture within the Anterior Chamber

- Easy and precise manipulation of the Iris at maximum anterior chamber stability
- The entire suture fixation is conveniently possible within the anterior chamber
- Maximum tissue preservation through tube-guided instruments
- Ideal combination of the hybrid instrument set with the “world’s smallest needle”, the ONATEC® iris needle



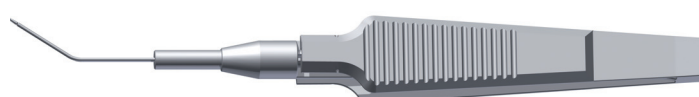
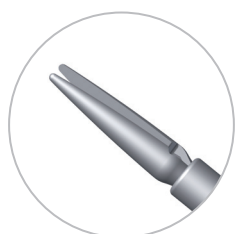
Comparison ONATEC® iris needle –
conventional needle

HATTENBACH IRIS SUTURE HYBRID INSTRUMENT SET



Secure, gentle and controlled gripping and handling of the ONATEC® needle in the anterior chamber due to the specially adapted geometry

G-32949
HATTENBACH
HYBRID NEEDLE HOLDER
for the anterior chamber
25 gauge / 0.5 mm



Simple and secure fixation of iris sutures within the anterior chamber

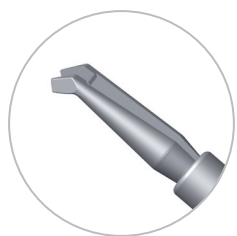
G-32947
HATTENBACH
HYBRID TYING FORCEPS
for the anterior chamber
25 gauge / 0.5 mm



Precise cutting of the suture within the anterior chamber

G-32948
HATTENBACH
HYBRID SCISSORS
for the anterior chamber
25 gauge / 0.5 mm

The perfect supplement to the 25 Gauge Hybrid Instrument Set:



- Flexible anterior chamber entry via both main incision and paracentesis
- Optimized design enables a safe, gentle and secure grasp and perfect control of the anterior part of the capsule
- Perfect suited to treat also traumatic cataract or zonulolysis

G-32944
HATTENBACH
CAPSULORHEXIS FORCEPS
25 gauge / 0.5 mm